

*Official Guide to the*  
*Shetland Pony Society*



*of*  
*North America*

*Revised January 2009*

# Bylaws of the Shetland Pony Society of North America

## ARTICLE I – NAME AND PURPOSE

**Section 1** — Name: The name of the organization shall be the **Shetland Pony Society of North America**. It shall be a nonprofit organization incorporated under the laws of the State of Maryland.

**Section 2** — Purpose: The **Shetland Pony Society of North America** is organized exclusively for charitable, scientific, and educational purposes.

The purpose of this corporation is:

- to encourage the breeding of Shetland ponies which reflect the ancestral qualities of traditional Shetland ponies, through certification of type via inspection and lineage ;
- to support and organize breed shows which promote the traditional Shetland pony's breed characteristics and qualities;
- to create and maintain a registry of Shetland ponies which define the type and pedigree described in the breed standards established by this society;
- to promote educational opportunities which encourage the safe and enjoyable use of Shetland ponies by adults and children for pleasure, showing, and breeding purposes;
- to further the scientific definition of the traditional Shetland pony through the use of DNA testing and other technologies.

## ARTICLE II – MEMBERSHIP

**Section 1** — Eligibility for membership: Membership is granted after completion and receipt of a membership application and annual dues. All memberships shall be granted upon a majority vote of the board.

**Section 2** — Annual dues: The amount required for annual dues shall be \$25 (U.S. funds) per single member or \$35 (U.S. funds) per family household each year. Family is defined as adults and related children under age 18 residing in the same household. Names and ages of all family members must be submitted with membership application. Continued membership is contingent upon being up-to-date on membership dues. The dues period will run from January 1 to December 31 of each year. Points for the current show year will only accrue from the date that current membership dues are received by the Membership Secretary.

**Section 3** — Rights of members: Members are entitled to one vote per membership (single or family) per year.

**Section 4** — Resignation and termination: Any member may resign by filing a written resignation with the secretary. Resignation shall not relieve a member of unpaid dues, or other charges previously accrued. A member can have their membership terminated by a majority vote of the board.

**Section 5** — Non-voting membership: The board shall have the authority to establish and define nonvoting categories of membership.

## ARTICLE III – MEETINGS OF MEMBERS

**Section 1** — Regular meetings: Regular meetings of the board and appointed committees shall be held at a time and place designated by the chair of the board and the chairs of each committee.

**Section 2** — Annual meetings: An annual meeting of the members shall take place in the month of February, the specific date, time, and location of which will be designated by the board. Business for the upcoming year will be discussed at the annual meeting.

**Section 3** — Special meetings: Special meetings may be called by the chair or simple majority of the board.

**Section 4** — Notice of meetings: Notice of each meeting shall be given to each voting member, by mail and/or email not less than two weeks prior to the meeting.

**Section 5** — Quorum: The members present at any properly announced general meeting shall constitute a quorum.

**Section 6** — Voting: All issues to be voted on shall be decided by a simple majority of those present at the meeting in which the vote takes place or, in some cases, by mail-in voting as decided by the board. At meetings of the board, at least five members must be present for a vote to take place.

## ARTICLE IV – BOARD OF DIRECTORS

**Section 1** — Board role, size, and compensation: The board is responsible for overall policy and direction of the association, and delegates responsibility of day-to-day operations to the staff and committees. The board shall have seven members, plus one youth member (eligible age: 13 through 19 years). The board receives no compensation other than approved reimbursement of expenses accrued in direct relation to society business.

**Section 2** — Terms: All board members shall serve two-year terms, but are eligible for re-election.

**Section 3** — Board elections: New board members and current board members shall be elected or reelected by the voting of members at the annual meeting. Board members will be elected by a simple majority of members present at the annual meeting.

**Section 4** — Election procedures: A Nominating Committee shall be responsible for nominating a slate of prospective board members to represent the society. In addition, any member can nominate a candidate to the slate of nominees.

**Section 5** — Quorum :A quorum must be attended by at least five out of seven adult board members for business transactions to take place and motions to pass.

**Section 6** — Officers, Youth Member, and Duties: There shall be four officers of the board, consisting of a chair, vice-chair, secretary and treasurer. The duties of the officers are as follows:

The chair shall convene regularly scheduled board meetings, shall preside or arrange for other members of the Executive Committee to preside at each meeting in the following order: vice-chair, secretary, treasurer.

The vice-chair shall chair committees on special subjects as designated by the board.

The secretary shall be responsible for keeping records of board actions, including overseeing the taking of minutes at all board meetings, sending out meeting announcements, distributing copies of minutes and the agenda to each board member, and assuring that corporate records are maintained.

The treasurer shall make a report at each board meeting. The treasurer shall assist in the preparation of the budget, help develop fundraising plans, and make financial information available to board members and the public.

The youth member shall represent the concerns and expectations of the youth in the organization.

**Section 7**— Vacancies: When a vacancy on the board exists mid-term, the secretary must receive nominations for new members from present board members two weeks in advance of a board meeting. These nominations shall be sent out to board members with the regular board meeting announcement, to be voted upon at the next board meeting. These vacancies will be filled only to the end of the particular board member's term.

**Section 8** — Resignation, termination, and absences: Resignation from the board must be in writing and received by the Secretary. A board member shall be terminated from the board due to three or more absences from board meetings in a year. A board member may be removed for other reasons by a majority vote of the remaining directors.

**Section 9** — Special meetings: Special meetings of the board shall be called upon the request of the chair, or majority of the board. Notices of special meetings shall be sent out by the secretary to each board member at least two weeks in advance.

## **ARTICLE V — COMMITTEES**

**Section 1** — Committee formation: The board may create committees such as fundraising, registry, show, and others as needed. The board chair appoints all committee chairs.

**Section 2** — Executive Committee: The four officers serve as the members of the Executive Committee. Except for the power to amend the Articles of Incorporation and bylaws, the Executive Committee shall have all the powers and authority of the board of directors in the intervals between meetings of the board of directors, and is subject to the direction and control of the full board.

**Section 3** — Finance Committee: The treasurer is the chair of the Finance Committee, which includes three other board members. The Finance Committee is responsible for developing and reviewing fiscal procedures, fundraising plans, and the annual budget with other board members. The board must approve the budget and all expenditures must be within budget. Any major change in the budget must be approved by the board or the Executive Committee. The fiscal year shall be the calendar year. Annual reports are required to be submitted to the board showing income, expenditures, and pending income. The financial records of the organization are public information and shall be made available to the membership, board members, and the public.

## **ARTICLE VI— AMENDMENTS**

**Section 1** — Amendments: These bylaws may be amended when necessary by a simple majority of the board of directors. Proposed amendments must be submitted to the Secretary to be sent out with regular board announcements.

## **CERTIFICATION**

These bylaws were approved at a meeting of the board of directors by a majority vote on **September 23, 2005**.

Secretary: Laurie Donaldson

Date: 9/23/05 (amended 1/13/07, 1/25/08)

**Shetland Pony Society of North America**  
**Shetland Pony Type Description**

The traditional Shetland pony is a compact wonder. These are the ponies we remember from faded photographs taken in the early 1900s. These are the ponies that pranced across the pages of Black Beauty as the ever loyal and wise Merry Legs. These are the same ponies many of us had a love - hate relationship with as kids, ala the Thelwell pony. As times have changed there has been pressure to change these traditional type ponies. The Shetland Pony Society of North America has been formed to maintain the integrity of this hardy breed.

The ideal Shetland pony type characteristics as outlined by the Shetland Pony Society of North America are as follows:

**1. Height of the Shetland Pony:**

Ideally, no more than 44 inches, but absolutely no more than 46 inches at four years of age as measured at the highest point of the withers to the ground by measuring stick or other SPSNA approved method.

**2. Body Morphology of the Shetland Pony:**

- A strong muscular structure and square stance.
- Head is small with proportionately rounded ears pointing forward; a broad forehead with a slightly concave face tapering to a broad muzzle and sturdy jaw with open nostrils.
- A rounded barrel with well-sprung ribs, the brisket slightly below the elbow and short coupled; proportioned withers to elbow and elbow to ground without the appearance of dwarfism. An appearance of legginess is considered undesirable.
- A defined neck and throatlatch triangular in shape.
- A sloping shoulder that forms a triangle from point of shoulder to withers to head.
- Front legs straight with sturdy, wide cannon bone.
- Hind legs straight, proportioned, and plumb from buttocks to hock to ankle with strong bone.
- Hindquarters broad with substance and wide view from the rear.
- The back is short and wide along with well-rounded buttocks.
- The mane is full and long and the tail is full and long with a natural set.
- The hoof is well rounded, hard, and dense.
- The coat is rich, thick, and of any color (except Appaloosa). Eyes of any color.

**3. Temperament:**

The shetland pony is steady with an even, friendly attitude; a native intelligence that is willing and trainable; an interested, hardy pony character.

# Shetland Pony Society of North America

## Show Rules and Regulations

### **A. General Show Rules:**

1. All ponies must be registered with the Shetland Pony Society of North America and show proof of registration to show in a SPSNA sanctioned show. Foals of the current year must be eligible to be registered and either be registered or have a pending registration number verified by the SPSNA in order to be shown. Foal registration applications may be made on the show date and a pending registration number will be assigned by the show management. Applications must be complete and contain all applicable fees. SPSNA Shetland Ponies will be measured at the first show attended in any competition year unless they have reached 5 years of age as of January 1 of the current show year and have been issued a permanent 46 " or under height card by the SPSNA. A standard USEF measuring stick or approved height bar may be used.
2. The Shetland Pony is to be shown standing in a square, natural stance with no stretching. The Shetland Pony may be shown barefoot or with a light plate. No built up feet and no excessive heel or toe allowed. All ponies must be sound for show ring purposes. Any pony showing evidence of lameness or other unsoundness that adversely affects its serviceability will be denied an award.
3. A well-groomed Shetland Pony is a priority of the show ring. The Shetland Pony's ears may be trimmed flat with the outer edges of the ear but there must be no trimming inside the ear. Trimming of whiskers on the face is acceptable but eyelashes may not be trimmed. Bridlepaths may be no wider than one (1) inch. Leg feathers may or may not be trimmed at the discretion of the exhibitor. No false hair, artificial coloring, or make-up may be used. Shetland ponies should be shown with a full coat, but ponies may be clipped in the interest of comfort in hot weather. Very close clipping anywhere on the pony is discouraged. Foals should not be clipped.
4. Shetland Ponies under age one may not be shown with a bit.
5. All exhibitors must be dressed in clean, neat, appropriate attire. For gentlemen: closed-toe/heel leather shoes, shirt with collar, and pants. For ladies: closed toe/heel leather shoes, shirt with collar, and skirt, dress, or pants. No shorts, blue jeans, skirts above the knee, strapless tops, clogs, rubber or canvas shoes allowed. No farm names, individual names, or previously won awards (belt buckles, hats, etc.) should be displayed in any way. ASTM/SEI approved-hard hats must be worn by all youth exhibitors in under saddle and driving classes.
6. No whips or crops over 18 inches long allowed in halter classes.
7. No item disturbing to other entries may be used inside or outside the show ring while showing a pony. Conduct designed to distract or interfere with another entry will not be tolerated by show management. Any abuse of a pony on the show grounds will not be tolerated. Offenders will be asked to leave the show ring and may be barred from the remainder of that show by show management.
8. In the interest of safety, an unruly Shetland Pony may be excused from the ring by the judge. It is the judge's decision to dismiss unsafe or unruly ponies from the ring.
9. Sanctioned SPSNA shows are limited to a maximum of two judges per show.
10. Show management will apply to the SPSNA for show sanctioning a minimum of 60 days prior to the show date. A show management packet will be sent to all show managers requesting sanctioning. All requirements for sanctioning by SPSNA must be met in order for the show to be approved by SPSNA.
11. The SPSNA will provide a list of approved judges for sanctioned SPSNA shows. A learner judge system will be put in place to encourage training of additional judges and to ensure that judges are well-versed in the expectations of judging for the SPSNA Shetland Pony type in the show ring.
12. In case of joint ownership, at least one owner of a pony must be a current member of SPSNA for show points to accrue.

## **B. Class Procedures (in numerical order by class number):**

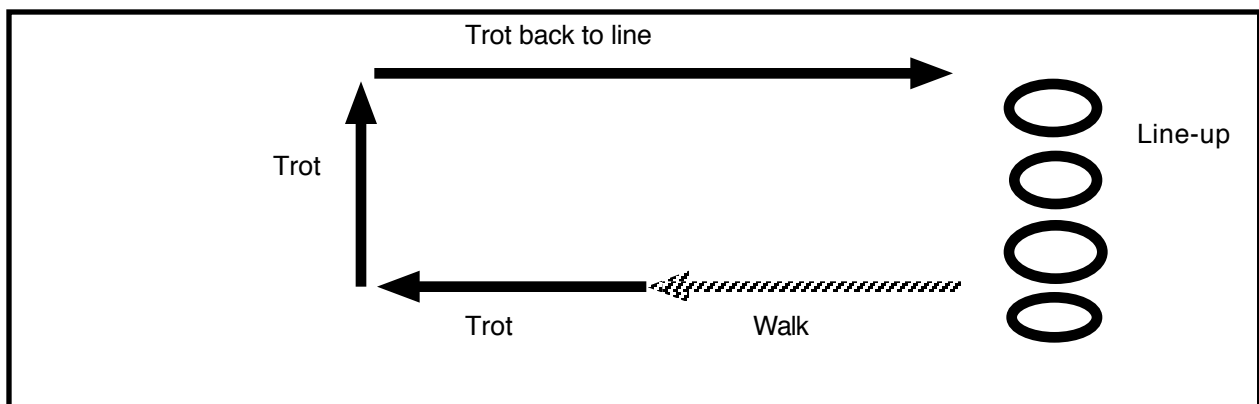
### **Youth Showmanship:**

**100. Youth Showmanship (13 to 17 yrs)**

**101. Youth Showmanship (9 to 12 yrs)**

**102. Youth Showmanship (8 yrs & Under)**

All youth showmanship classes will follow the same procedure as for halter classes as outlined in the pattern below. Ponies and youth exhibitors will enter the ring to the left, line up side by side at a point designated by the ringmaster or judge, and ponies will stand square. Ponies will be led one at a time at a walk away from the judge to a halfway point indicated by the ringmaster, continue at a trot to a designated point, turn to the right with exhibitor on the outside of the pony, trot a short distance, then trot back to return to the line up. For the 13-17 year old age group, the judge may ask for a specific task, within reason and appropriate to the age group, with a clear explanation to all. In the 8 & Under age group, an attendant over the age of 16 may enter with the child. The attendant may not aid the youth in any way unless absolutely necessary for safety reasons. Judges should be prepared to comment on youth showmanship techniques in any age category with preferably positive overall suggestions. Youth age is determined by the child's age as of January 1 of the current year.



\*\*\*\*\*

### **Performance:**

Traditional English or Western riding apparel accepted. Approved ASTM/SEI hard hats must be worn properly by all riders in all under saddle classes regardless of mode of outfit. It should be emphasized that a child, especially younger children, should not be penalized for clothing as long as it is neat, safe, and appropriate for the show ring. Leather shoes preferably with heels and/or safety stirrups are recommended.

#### **Please note:**

Rider/pony combinations in Leadline classes 103 or 104 may cross-enter into Leading Rein class 105 only.

Rider/pony combinations in Leading Rein class 105 may cross-enter into Leadline classes 103 or 104 **OR** Walk class 106 and/or Equitation Walk class 110.

**103. Leadline (3 Yrs & Under)**

**104. Leadline (4 to 6 Yrs)**

**Entry made in the name of the child/pony combination.** Pony should be under the control of the child as much as possible, with the adult holding a lead attached to the bridle at the cavesson or bit. Exhibitors may have one additional attendant in leadline classes. Judged 75% on child's equitation and 25% on correct type, manners, performance, and suitability of pony. Walk only.

**105. Leading Rein: Youth ages 8 and Under. Entry made in the name of the child/pony combination.** The leading rein may be attached to the cavesson only and the pony should be under control of the child at all times. Leader must be 14 years or older. Pony will walk both ways of the ring, lineup, and stand quietly. Each pony will be called from the line individually to walk out, and then trot back past the judge. Ponies will not be asked to back. Judged 25% on child's equitation and control of pony and 75% on pony's correct type, performance, manners, and suitability.

- 106. **Shetland Pony Walk**
- 107. **Shetland Pony Walk-Trot**
- 108. **Shetland Pony Walk-Trot-Canter**
- 109. **Shetland Pony Over Fences**

**Entry made in the name of the pony.** Only one pony/rider combination per Over Fences class.

Riders in classes 107 - 109 are not eligible for Leadline or Leading Rein classes. To work both ways of the ring at the appropriate gait(s), lineup, stand quietly, and back. Ponies entered in Over Fences will complete a course of 4 to 8 fences not over 18 inches in height. Over Fences course may be trotted or cantered. Course must be posted near ring gate at least one hour prior to class start. Three refusals in the Over Fences course results in elimination. The pony will be judged 100% on performance, manners, suitability as a child's mount, and correct type. Rider should be in complete control of pony at all times.

- 110. **Equitation Walk**
- 111. **Equitation Walk-Trot**
- 112. **Equitation Walk-Trot-Canter**
- 113. **Equitation Over Fences**

**Entry made in the name of the child. Each child/pony combination must be assigned a unique number in Equitation Over Fences.** Riders in classes 111-113 are not eligible for Leadline or Leading Rein classes. Equitation Walk-Trot and Equitation Walk-Trot-Canter to work both ways of the ring at the appropriate gait(s), lineup, stand quietly, and back. Riders entered in Over Fences will complete a course of 4 to 8 fences not over 18 inches in height. Over Fences course may be trotted or cantered. Course must be posted near ring gate at least one hour prior to class start. All equitation classes to be judged 100% on rider 's equitation and ability to control pony. This division does not count towards Best Child's Pony. Three refusals in the Over Fences course results in elimination.

**114. Jumper-in-Hand:** Minimum age of exhibitor is 8 years of age. Pony must be 3 years old or older. Exhibitors may not go over jumps. Pony to be shown in halter or bridle with appropriate lead. Whip may be carried but only as encouragement and may only be used to lightly tap pony's hindquarters if needed. Jump standards should be less than 42 inches, with no wings. Jumps may not be higher than 21 inches and may include standard post and rail, coop, etc. Four to six jumps required. Pony is judged on correct type, manners, way of going, and ability to negotiate course. Three refusals will eliminate pony from class. Course will be posted near ring gate at least one hour prior to class start or provided to exhibitors in their show packet on show day. Show management must take into account that handlers are on foot when designing the course.

- 115. **Adult Halter Obstacle (over 17 yrs).**
- 116. **Youth Halter Obstacle (17 yrs & under)**

**Entry made in the name of the pony. Pony may be shown in class one time.** Exhibitors may show more than one pony. Pony must be at least 1 year old. Class to be judged on performance and manners in each obstacle. Pony will be penalized for refusal to perform task or excessive time taken on an obstacle, but not eliminated. Maximum time of one minute per obstacle. Pony may be shown in bridle or halter with lead. The Adult Halter Obstacle class shall have more demanding tasks than the Youth Halter Obstacle class. Maximum of 6 obstacles per class. Obstacles may not pose a hazard to either pony or handler and should reflect tasks encountered in everyday life. Obstacles may include small jump (no more than 12 inches), a pattern at a requested gait, daily chores ( mailbox, gate, umbrella, putting on a blanket, etc.), walking over tarp, backing between rails, trotting cavaletti, picking up hoof for cleaning, etc. Course will be posted near gate at least one hour before class start or provided in the show packet. Exhibitors may walk the course prior to the time allocated for judging set by show management. Any safety concerns may be addressed by show management at any time and the course may be altered at the show manager or steward's discretion. No whips or crops allowed. An adult may accompany a youth handler under 8 years of age, but may not help or influence the youth's or pony's performance in any way. At the discretion of the show manager, this class may be set up and held outside the show ring and judged by a guest judge or steward assigned by the show manager.

\*\*\*\*\*

## **Driving:**

Driving apron, appropriate hat (no ballcaps) or hard hat, and appropriate driving whip are required. Gloves are optional. A neat, clean appearance with safety in mind is paramount. Safety helmets (hard hats) are not penalized. No gowns or formal attire.

The emphasis is on safety first. Unsafe or unruly ponies will be dismissed from the ring by the judge. Drivers are encouraged to be aware of and follow ADS pleasure driving standards (see [www.americandrivingsociety.org](http://www.americandrivingsociety.org)). Bicycle wheel carts are allowed but wooden or solid spoke wheels are preferred for safety reasons. Well-fitting leather, biothane, or beta-biothane harnesses are allowed in black or brown. Round or square blinkers are allowed. Any non-twisted snaffle or other standard driving bits such as liverpool or butterfly bits are allowed. Bridle must include cavesson. Checks are allowed but optional and should not be adjusted tightly. Headers are allowed but not required while standing in the line up. Header may not touch the pony in any way except in an emergency. Passengers may act as headers in the line up. Passengers may not aid the driver in any way during the time in the ring. All youth drivers under age 12 MUST have an adult experienced in driving as a passenger. Adult passengers may act as headers for youth or remain in the carriage during the line up. Minimum age for driving ponies is 3 years old.

Driving Gaits: Walk: A freely moving and regular walk. The pony should walk calmly with an even and determined pace. The walk is a four beat gait. Slow Trot: The trot is slower and more collected. The pony should indicate willingness to be driven lightly on the bit while maintaining a steady cadence. Working Trot: This is the pace between the extended and the slow trot. The pony should go forward freely and straight, without high knee or hock action, on the bit, with even steps. Extended Trot: This is a clear, but not excessive, increase in pace and lengthening of stride while remaining well balanced. Light contact to be maintained. Excessive speed and action will be penalized. Halt: Pony and vehicle should be brought to a complete square stop. At the halt, pony should stand quietly, and straight with the weight evenly distributed over all four legs. Back: The pony must move backward at least three steps in an unhurried manner, pushing the carriage back evenly in a straight line. The driver should use quiet aids and light contact.

**117. Ground-Driving for Green Ponies:** No cross-entering in any other driving classes except Ground Driving for Green Drivers. The emphasis is to give the **green driving pony** experience in the ring with other ponies. All ponies will work at the same time. Ponies will enter at a walk on the rail, trot a short distance on the rail, cross on the diagonal at the direction of the ringmaster at a walk, change direction and walk on the rail, stop on the rail, then move to the lineup at the direction of the ringmaster. Ponies will stand quietly and back 3 steps in a lineup. Emphasis is on safety and how well the pony is prepared for putting to a carriage in the future. Drivers must wear hard hats and carry a driving whip. Pony must be at least 2 years old. Exhibitors must be 10 years and older.

A Ground-Driving for Green Drivers class may be added at the discretion of show management (assigned a 500 class number). This class will be non-pointed and follow the same specifications as Class 117, but will be judged on the green driver. Any SPSNA-registered pony is eligible. The driver should be able to ground-drive a pony safely with an emphasis on developing skills as a future carriage driver. Procedure is same as for class 117.

**118. Novice Pony Driving: Novice entries may not enter in any other driving class.** The Novice Pony Driving class is for ponies that need more experience in the ring. The Novice Pony Driving class will include walk, slow trot, and working trot, and ponies will be required to back in the line up.

**119. Ladies Driving:** Ladies Driving is open to women 18 years or older (as of January 1 of current year).

**120. Gentlemen Driving:** Gentlemen Driving is open to men 18 years or older (as of January 1 of current year).

**121. Youth Driving:** Youth Driving is open to drivers 17 years and younger (as of January 1 of current year).

**122. Open Driving:** Open Driving is open to any driver /pony combination except Novice.

Required gaits for classes 119 through 122 include walk, slow trot, and working trot in both directions. Movement should be easygoing, collected, and ground covering, without high knee action. Ponies will stand quietly and back at the judge's request in the lineup or on the rail. Pony should be completely under the control of the driver, giving the impression of calmness, suitability, and soundness, and appearing to be a pleasure to drive.

**123. Driving Championship:** To be eligible for the Driving Championship (123), the pony must have entered in at least one of the following classes - 119, 120, 121, and/or 122 and have placed first or second in those classes. If a pony has placed first or second in different classes under more than one driver, one driver must be chosen to exhibit the pony in the Championship class. The Driving Championship class will be pointed as a Championship class.

**124. Driving Stakes:** To be eligible for the Driving Stakes class, the pony must have entered in at least one of the following classes - 119, 120, 121, and/or 122. Required gaits for this class include walk, slow trot, working trot, and extended trot in both directions. The pony will be expected to stand quietly and back in the lineup or on the rail at the judge's request. Pony movement should be easygoing, collected, and ground covering without high knee action. The driver will be judged on posture, reinsmanship, and overall driving ability. Pony should be completely under control of the driver, giving the impression of calmness, suitability, and soundness, and appearing to be a pleasure to drive. The Driving Stakes class will be pointed as a Grand Championship class. Prize money awarded.

**125. Best Child's Pony Grand Championship:** This Grand Championship class is tabulated by show management for the classes listed below and will be awarded at the conclusion of all eligible classes. This award counts as a Grand Championship. Since this class is a point tabulation and counts as a Grand Championship, there is no entry fee. All ponies entered in at least one eligible class are eligible for the Grand Championship.

Eligible classes:

- |                       |                            |
|-----------------------|----------------------------|
| 105. Leading Rein     | 109. Over Fences           |
| 106. Walk             | 116. Youth Halter Obstacle |
| 107. Walk-Trot        | 121. Youth Driving         |
| 108. Walk-Trot-Canter |                            |

\*\*\*\*\*

### **Halter Classes:**

**200 - 202. Junior Stallion Foal, Yearling, Two Year Old**

**204 - 205. Senior Stallion 3&4 Year Old, 5 & Older**

**208 - 210. Junior Mare Foal, Yearling, Two Year Old**

**212 - 214. Senior Mare 3&4 Year Old, 5 & Older, Broodmare (Wet)**

**217 - 218. Junior Gelding Yearling, Two Year Old**

**220 - 221. Senior Gelding 3&4 Year Old, 5 & Older**

Classes with two or less ponies entered in each may be combined into one class in each age division. For example, if there is one pony entered in class 200, none entered in 201, and two entered in 202, the show management may combine classes 200-202 into one class. Awarded points will count in each pony's age group. Exhibitors will follow the same pattern as Youth Showmanship classes. The pattern may be adjusted by show management to fit the ring conditions. Ponies and exhibitors will enter the ring to the left, line up side by side, and ponies will stand square. Ponies will be led one at a time at a walk away from the judge to a halfway point indicated by the ring steward, continue at a trot to a designated point, turn to the right with exhibitor on the outside of the pony, trot a short distance, then trot back to return to the line up. All classes, including foal classes to be moved. All halter classes to be judged 50% on correct type and manners, 50% on conformation and way of going, unless stated otherwise. Walk and working trot descriptions are the same as for driving gaits. Class 214 (Broodmare - Wet) may not cross-enter into classes 209, 210, 212, or 213.

**203, 206, 211, 215, 219, 222. Junior and Senior Championship Classes**

**207, 216, 223. Grand Championship Classes**

**224. Supreme Championship Class**

First and second place winners of each age group are eligible to compete in the corresponding Championship classes. Reserve Champions and Champions are then eligible to compete in the corresponding Grand Championship classes (207, 216, 223). Grand Champions only from the Mare, Stallion, and Gelding categories are eligible to compete in the Supreme Championship class (224).

Championship Ring Procedures (203, 206, 211, 215, 219, 222): First and second place ponies shall line up and be moved the same as for halter classes. Each championship class will be treated as a new class and ponies will be moved. If there are two judges, judge 2 will repeat the process with his/her first and second place winners.

Grand Championship and Supreme Championship Ring Procedures (207, 216, 223, 224): For each Grand Champion division, Champions and Reserves from the Junior and Senior Championship classes for that division will line up side by side in the ring to be judged. For the Supreme Championship, the Grand Champion winners only of the mare, gelding, and stallion divisions will line up side by side in the ring to be judged. If there are two judges, judge 2 will repeat the process with his/her Champion or Grand Champion winners. Ponies may be moved at the discretion of the judge(s). Supreme Championship classes are non-pointed.

**300. Get of Sire: Entry made in name of sire.** This class is non-pointed and the sire does not have to be registered with the SPSNA, but the offspring shown must be registered. Three ponies, any sex or age, which are the get of the same sire. Judged 50% on uniformity, 25% on correct type and manners, and 25% on conformation. Combined ownership permitted. Not to be worked.

**301. Produce of Dam: Entry made in name of dam.** This class is non-pointed and the dam does not have to be registered with the SPSNA, but the offspring shown must be registered. Two ponies, any sex or age, which are the produce of the same dam. Judged same as Get of Sire. Not to be worked.

**302. Mare and Foal of Current Year: Entry made in name of mare who must be registered with SPSNA.** Mare and foal of current year. Judged 50% on mare and foal conformation and 50% on correct type and manners. Not to be worked.

**303. Pinto (Multi-Color):** Any age or sex with any pinto color. Judged 100% on color.

**304. Solid Color:** Any age or sex with any solid color. Judged 100% on color.

**Optional Classes:** Optional classes are non-pointed and the choice of classes are left to the show management's discretion. Optional non-pointed classes should be numbered starting with 500. Optional classes should have clear class descriptions included in the show program. Classes that show the versatility and suitability of the pony for all ages are encouraged. Show management should keep safety foremost in mind when designing classes optional classes. Some suggestions for optional classes are:

- Ground-Driving for the Green Driver
- Costume
- Driving Cones
- Reinsmanship
- Combination Ride/Drive Class
- Dressage Test
- Egg Race
- Musical Chairs
- Cake Walk
- Grade Shetland Division

Classes that show the versatility and suitability of the Shetland Pony for all ages are encouraged. As with any class, show management should keep safety foremost in mind when designing optional classes.

**Grade Shetland Classes:** Show management may also include classes for Grade Shetland Ponies. These are ponies that fit the correct SPSNA Shetland Pony type standard but are not able to be registered with SPSNA. These ponies may not cross-enter into any other SPSNA 100, 200, or 300 series classes. Classes for Grade Shetlands are listed below and are judged the same as the corresponding SPSNA classes:

- Grade Shetland Halter (mare, gelding, stallion - any age)
- Grade Shetland Under Saddle (Walk-Trot or Walk-Trot-Canter)
- Grade Shetland Leading Rein
- Grade Shetland Halter Obstacle

## ***Shetland Pony Society of North America List of Classes***

All classes must be assigned the class numbers used below. Performance entries are made in the name of exhibitor or pony as noted: P = pony, C = child, C/P - Child/pony combination. All exhibitors are reminded to review the latest rulebook for cross entry information and rules.

### **Pointed Performance Classes:**

100. Youth Showmanship (13 to 17 yrs) - C
101. Youth Showmanship (9 to 12 yrs) - C
102. Youth Showmanship (8 yrs & under) - C
103. Leadline (3 yrs & under) - C/P
104. Leadline (4 to 6 yrs) - C/P
105. Leading Rein ( 8 yrs & under) - C/P
106. Walk - P
107. Walk-Trot - P
108. Walk-Trot-Canter - P
109. Pony Over Fences - P
110. Equitation Walk - C
111. Equitation Walk-Trot - C
112. Equitation Walk-Trot-Canter - C
113. Equitation Over Fences - C
114. Jumper-in-Hand (min. age of exhibitor - 8 yrs) - P
115. Adult Halter Obstacle - over 17 yrs - P
116. Youth Halter Obstacle - 17 yrs & under - P
117. Ground-Driving - P (may not cross-enter)
118. Novice Driving - P (may not cross-enter)
119. Ladies Driving (over 17 yrs) - P
120. Gentlemen Driving (over 17 yrs) - P
121. Youth Driving (17 yrs & u nder) - P
122. Open Driving - P
123. Driving Championship (1st and 2nd place winners from classes 119, 120, 121, 122 - no entry required)
124. Driving Stakes (must enter one of 119-122 - entry fee - prize money awarded) - P
125. Best Child's Pony Grand Championship - Point Tabulation (must have entered at least one of classes 105 through 109, 116, 121 - no entry required)

### **Pointed Halter Classes (all P):**

200. Junior Stallion Foal
201. Junior Stallion Yearling
202. Junior Stallion Two-Year Old
203. Junior Stallion Champion and Reserve Champion
  
204. Senior Stallion 3 & 4 Year Old
205. Senior Stallion 5 & Older
206. Senior Stallion Champion and Reserve Champion
  
207. Stallion Grand Champion and Reserve Gr. Champion
  
208. Junior Mare Foal
209. Junior Mare Yearling
210. Junior Mare Two-Year Old
211. Junior Mare Champion and Reserve Champion
  
212. Senior Mare 3 & 4 Year Old
213. Senior Mare 5 & Older
214. Senior Broodmare (Wet) - may not cross-enter into other mare halter classes

215. Senior Mare Champion and Reserve Champion
216. Mare Grand Champion and Reserve Grand Champion
  
217. Junior Gelding Yearling
218. Junior Gelding Two-Year Old
219. Junior Gelding Champion and Reserve champion
  
220. Senior Gelding 3 & 4 Year Old
221. Senior Gelding 5 & Older
222. Senior Gelding Champion and Reserve Champion
  
223. Gelding Grand Champion and Reserve Grand Champion
  
224. Supreme Champion (non-pointed) - Winners of Grand Champion Stallion, Mare, and Gelding classes

### **Non-Pointed Other Halter:**

300. Get of Sire
301. Produce of Dam

### **Pointed Other Halter:**

302. Mare and Foal of Current Year
303. Pinto (Multicolor)
304. Solid Color

**Optional:** Optional classes are non-pointed and the choice of classes are left to the show management's discretion. Optional non-pointed classes may be inserted at appropriate places in the show schedule but should be numbered starting with 500. Optional classes should have clear class descriptions. Some suggestions for optional classes are:

Ground-Driving for the Green Driver  
Costume  
Driving Cones  
Reinsmanship  
Combination Ride/Drive Class  
Dressage Test  
Egg Race  
Musical Chairs  
Cake Walk  
Grade Shetland Division

Classes that show the versatility and suitability of the Shetland Pony for all ages are encouraged. As with any class, show management should keep safety foremost in mind when designing optional classes.

# Shetland Pony Society of North America Lifetime Achievement Awards

1. The SPSNA Lifetime Achievement Awards are awarded to ponies that have demonstrated excellence in the performance and/or halter show ring. The awards are based on total points accrued over the lifetime of the pony.
2. To recognize the achievements of Shetland ponies in other venues, SPSNA will accept any ASPC Hall of Fame points accrued toward the SPSNA Lifetime Achievement Awards on a point-for-point basis. It is up to the owner of the pony to provide SPSNA with verification of ASPC Hall of Fame points prior to December 31st, 2006. ASPC Hall of Fame points will not be accepted after 12/31/2006.
3. SPSNA Lifetime Achievement Award points are awarded based on the number of ponies shown in a class down to four places.

## Examples:

Ex. 1: If 8 ponies are shown, points are awarded as follows:

- 1st place: 8 points
- 2nd place: 7 points
- 3rd place: 6 points
- 4th place: 5 points

Ex. 2: If 3 ponies are shown, points are awarded as follows:

- 1st place: 3 points
- 2nd place: 2 points
- 3rd place: 1 point

4. Championship classes are awarded points as follows:

- Junior Champion: 2 points
- Junior Reserve Champion: 1 point

- Senior Champion: 2 points
- Senior Reserve Champion: 1 point

Grand Champion (includes Best Child's Pony and Driving Stakes):

- Grand Championship: 4 points
- Reserve Grand Championship: 2 points

5. Show management is responsible for submitting results to SPSNA (refer to show management packet) where results for the Lifetime Achievement Awards will be tabulated.

**6. SPSNA Lifetime Achievement Awards are as follows:**

**SPSNA Bronze Thistle Lifetime Achievement Award: 125 points accrued**

**SPSNA Silver Thistle Lifetime Achievement Award: 250 points accrued**

**SPSNA Gold Thistle Lifetime Achievement Award: 375 points accrued**

# Shetland Pony Society of North America

## Forms

Each of the forms listed below are available from the Shetland Pony Society of North America website: ([www.shetlandponysociety.org](http://www.shetlandponysociety.org)).

Forms:

- Membership Form
- Pony Registration Form
- Prefix Application
- Request for Duplicate Registration
- Gelding Certificate
- Lease Certificate
- Stallion Service Certificate
- Stallion Service Report
- Transfer of Ownership Application
- SPSNA Open Show Points Approval Form

Questions?

- Email: [shetlandponysociety@hotmail.com](mailto:shetlandponysociety@hotmail.com)
- Call: 717-993-3775 (Laurie Donaldson)
- Write: 241 Grove Road  
Stewartstown, PA 17363

Additional copies of this rulebook may be found on the website.